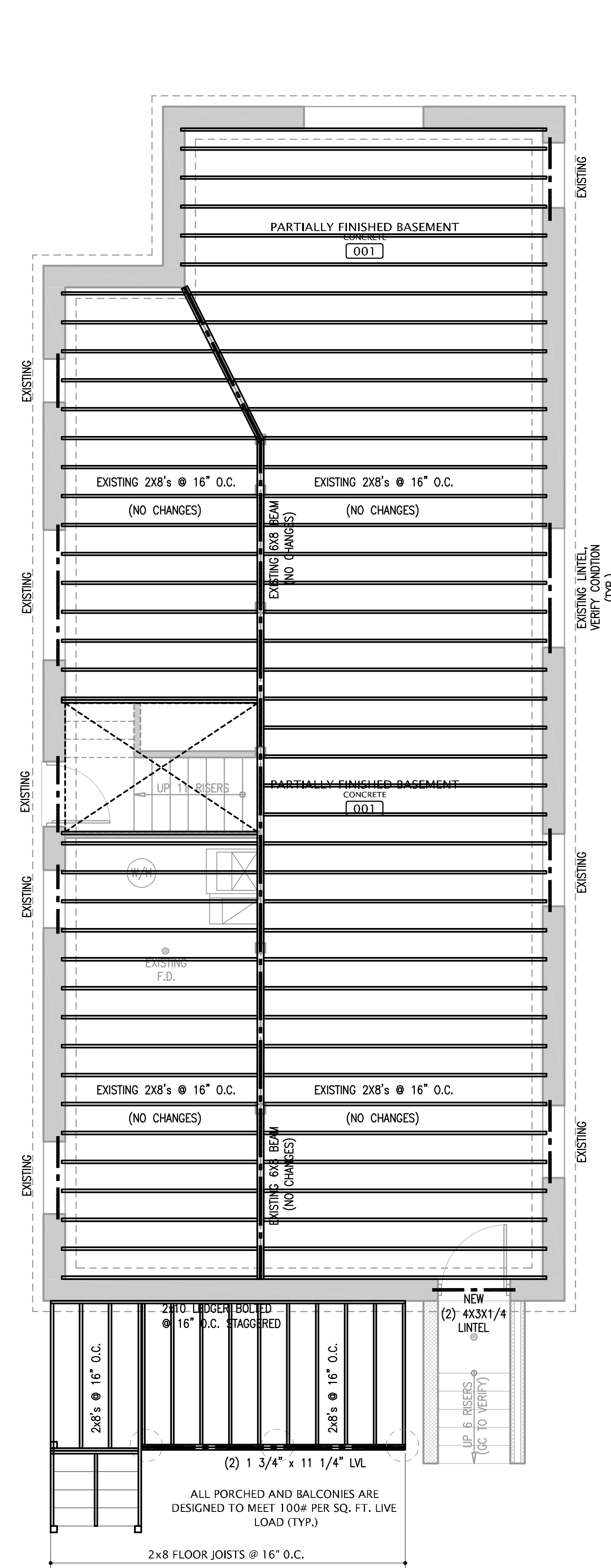


TYPICAL FRAMING NOTES:

1. PROVIDE A FULL DEPTH RIM JOIST AT THE CANTELEVER END OF ALL JOISTS
2. PROVIDE SOLID BLOCKING AT ALL CANTILEVERED SUPPORTS
3. AT BEAM TO BEAM CONNECTIONS USE HIGH CAPACITY STEEL HANGER EGO BY SIMPSON W/ REQUIRED NUMBER OF SDS 1/4"x3" SCREWS AS PER MANUFACTURERS INSTRUCTIONS
4. AT ALL BEAMS PROVIDE END BEARING PER MANUFACTURER'S INSTRUCTIONS
5. PROVIDE SOLID OR CROSS-BRIDGING FOR JOISTS @ 8'-0" O.C. AND AT ALL OVERHANG CROSSOVER POINTS (TYP) RPROVIDE STRONGBACKS PER MANUFACTURER'S INSTRUCTIONS
6. ALL HEADERS TO BE (2)2x12 WITH 1/2" PLY FLITCH UNLESS OTHERWISE SHOWN (TYP)
7. BOLT ALL MULTIPLE PLY LVL BEAMS PER MANUFACTURERS INSTRUCTIONS

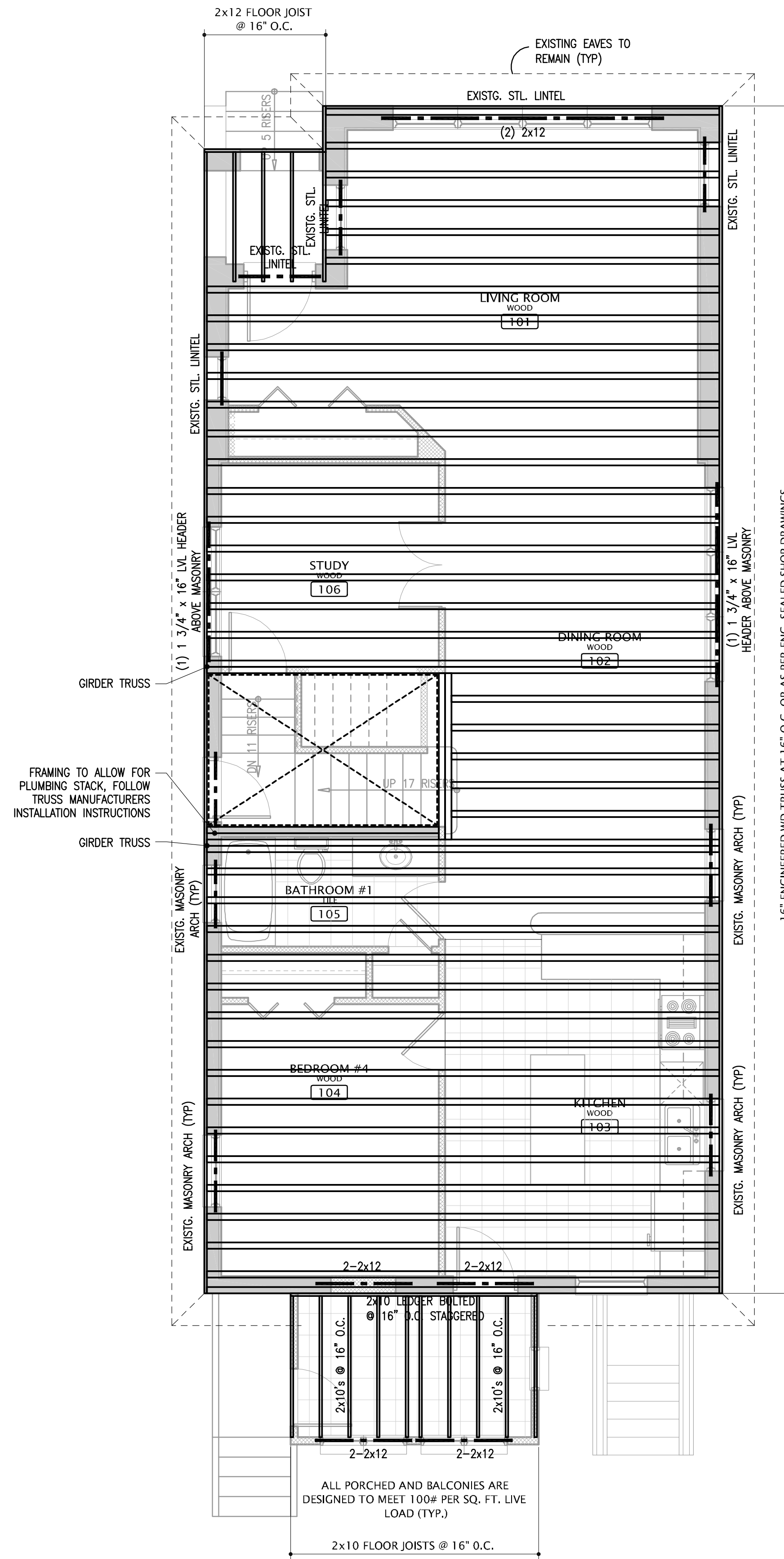
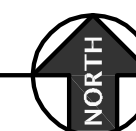
TYPICAL ROOF FRAMING NOTES:

1. ALL LUMBER SPF#2 MIN
2. ALL RAFTERS 2x10 AT 16" O.C.
3. ALL CEILING JOISTS 2x12 AT 16" O.C.
4. PROVIDE 2x6 COLLAR TIES AT MIDSPAN OF EVERY OTHER RAFTER WHERE CEILING JOISTS BELOW ARE NOT CONTINUOUS FROM ONE TOP PLATE TO THE OTHER (TYPICAL)
5. PROVIDE HURRICANE TIES AT EACH RAFTER TO PLATE
6. PROVIDE ATTIC ACCESS 22"x30" MIN AND PROVIDE SWITCHED LIGHT AT ACCESS



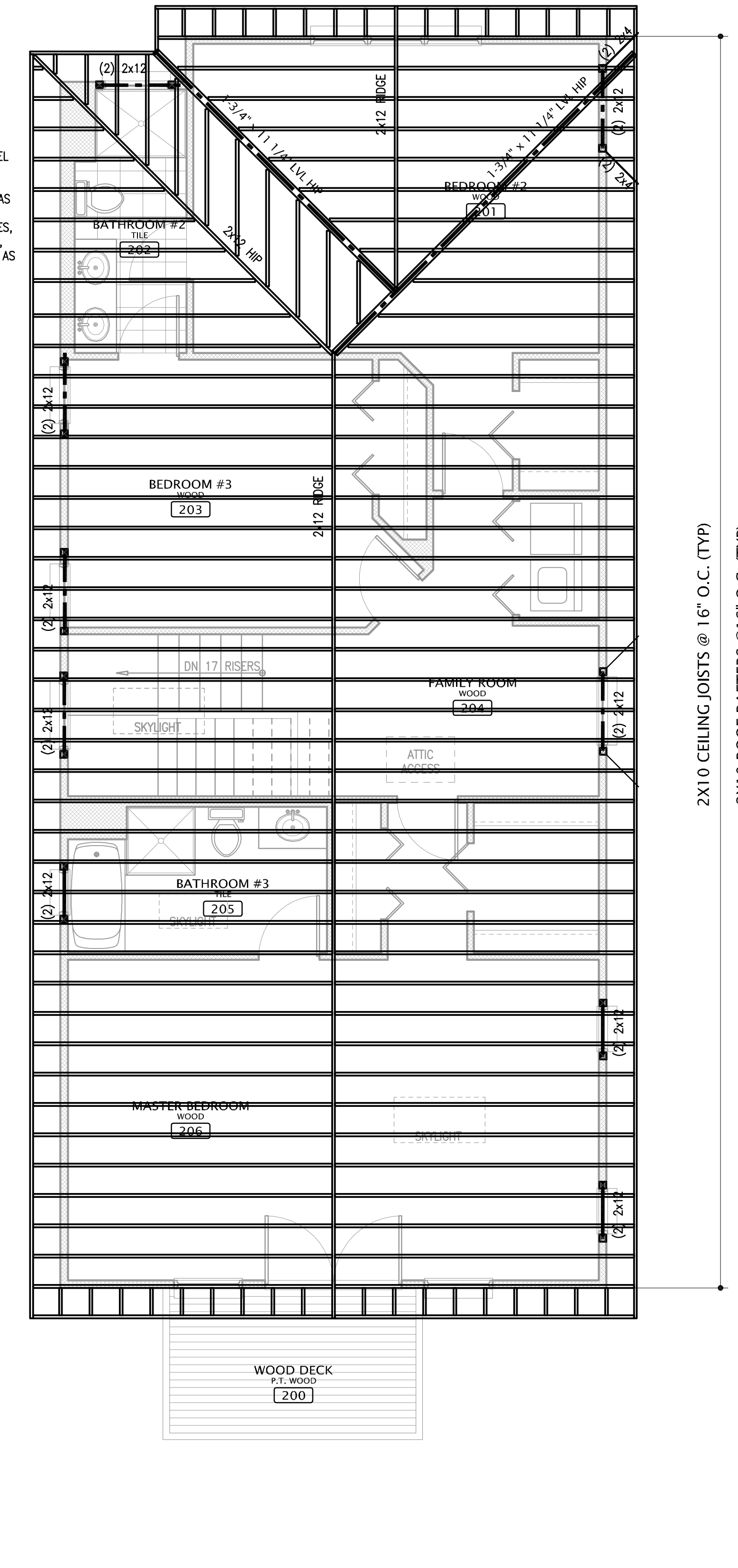
1st FLOOR FRAMING PLAN

SCALE: 1/4" = 1'-0"



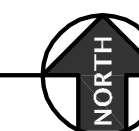
2nd FLOOR FRAMING PLAN

SCALE: 1/4" = 1'-0"



ROOF FRAMING PLAN

SCALE: 1/4" = 1'-0"



C:\GEP\PROJECTS\Chicago - 5121 W. Drummond\Chicago - 5121 Drummond_Base Framing.dwg 07/2009 3:03 PM