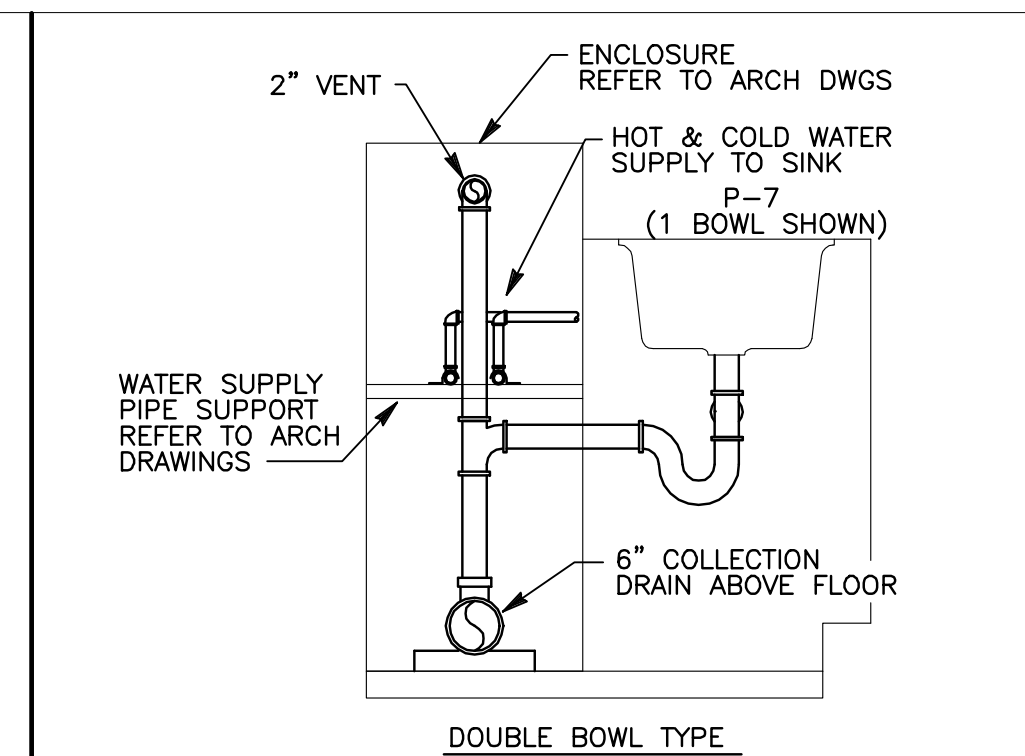
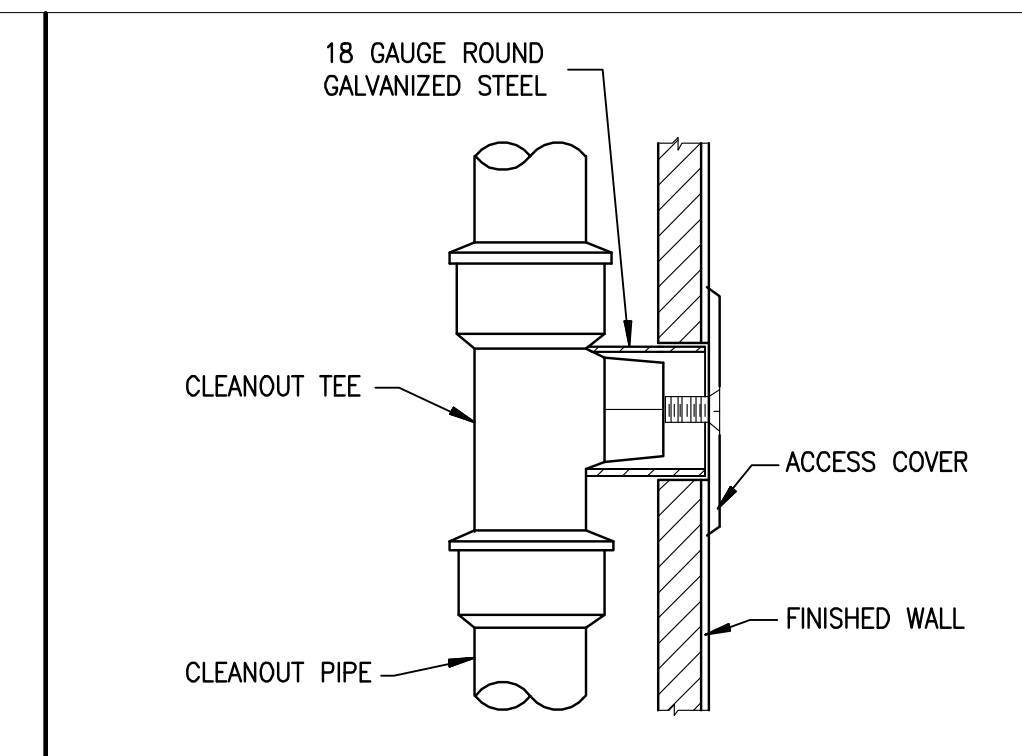


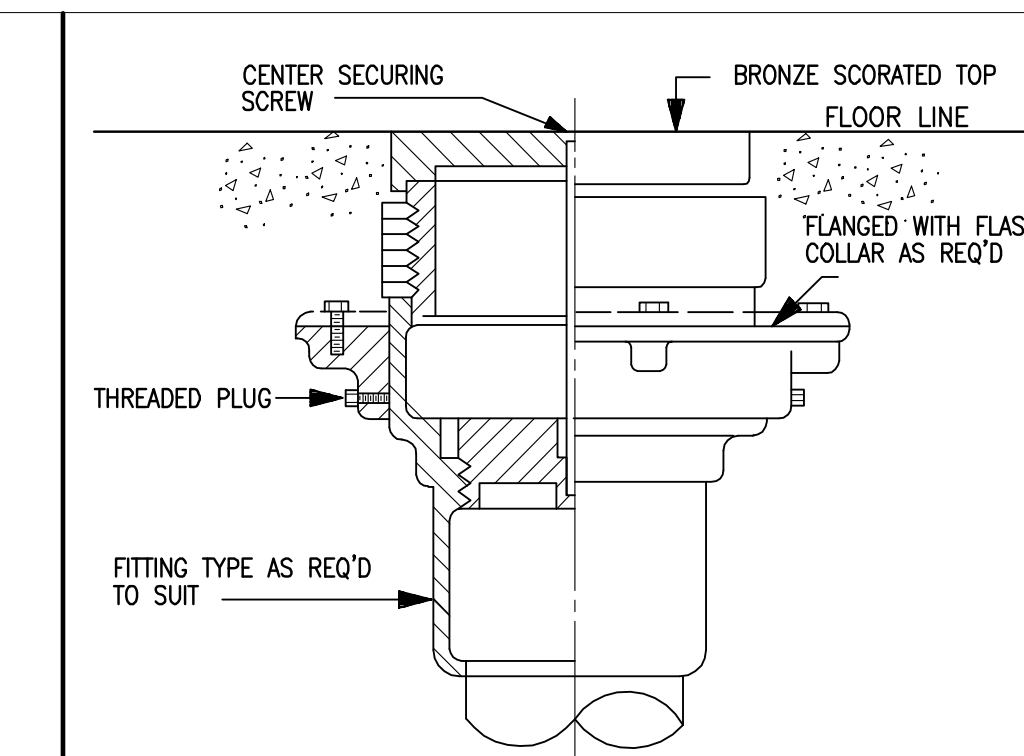
WASHER WATER CONNECTION DETAIL Scale: NTS File: 1



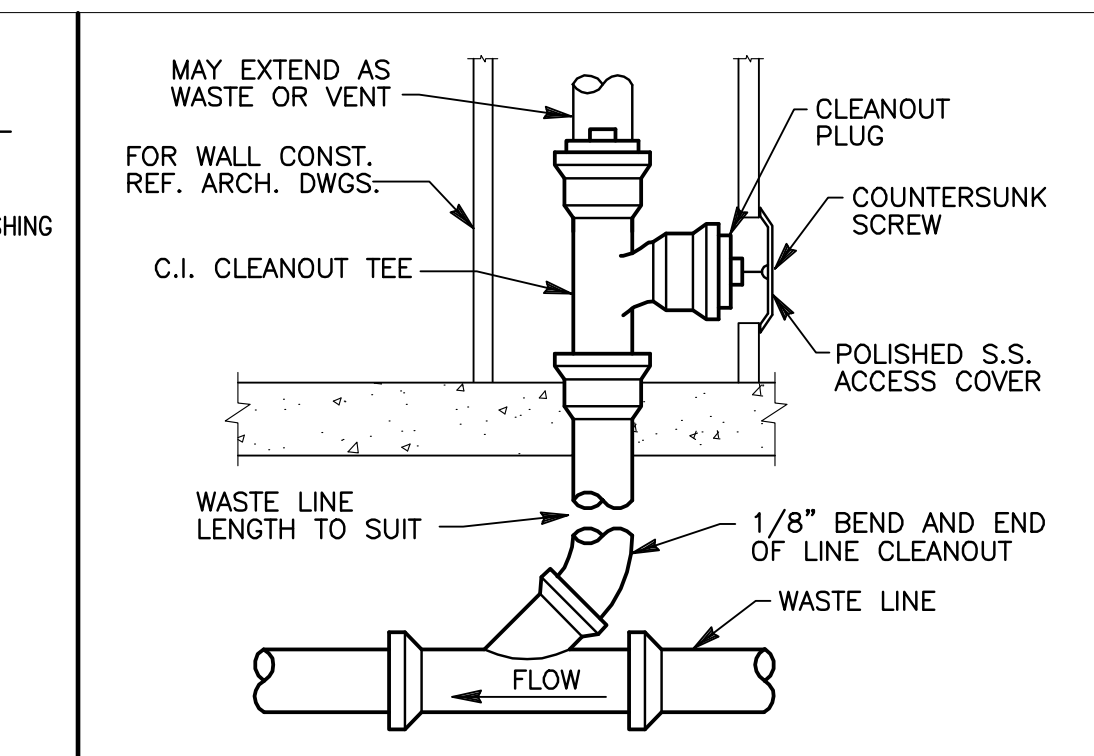
LAUNDRY SINK DRAIN CONNECTION DETAIL Scale: NTS File: 2



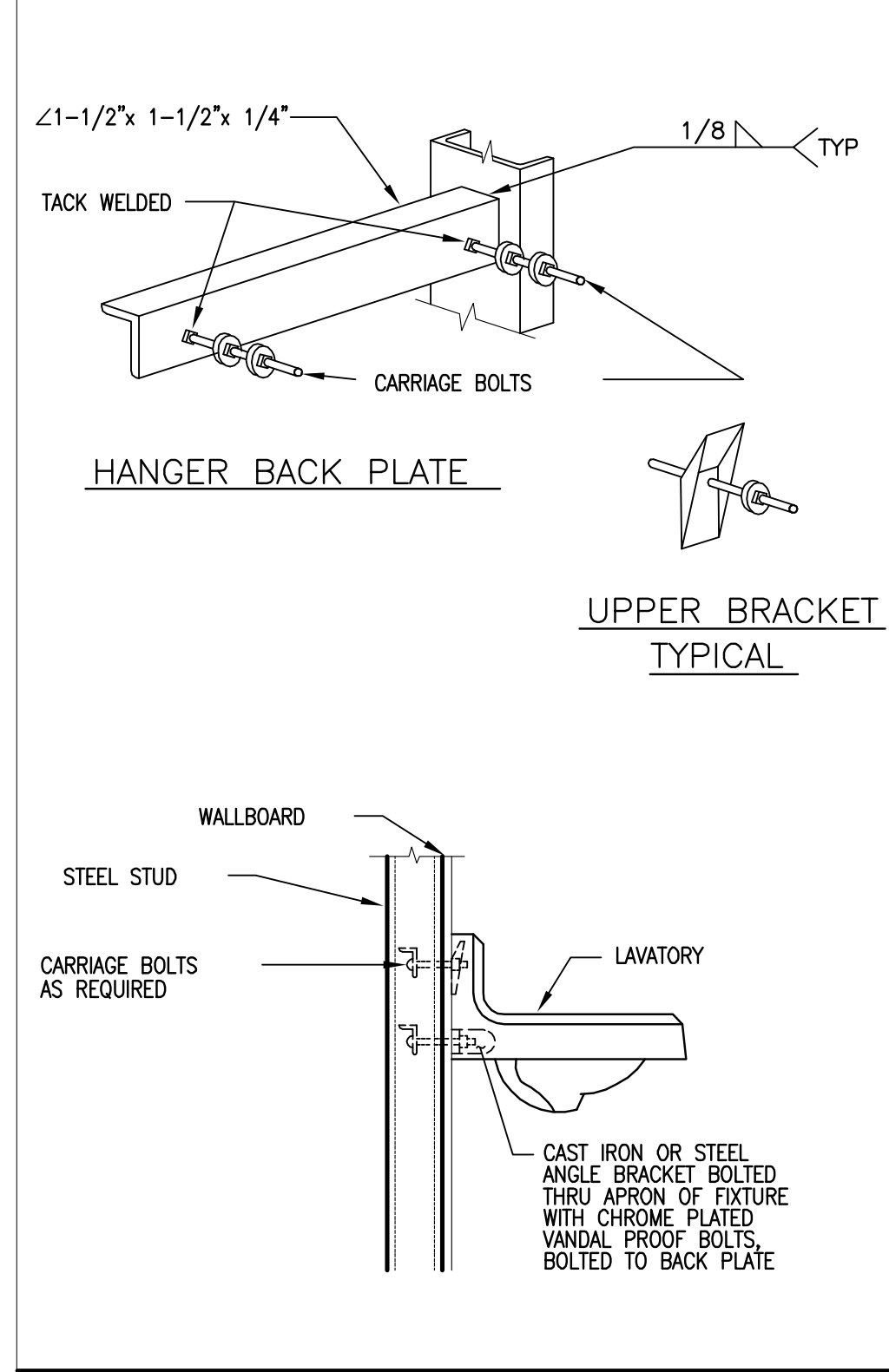
WALL CLEANOUT DETAIL Scale: 3/4"=1'-0" File: 3



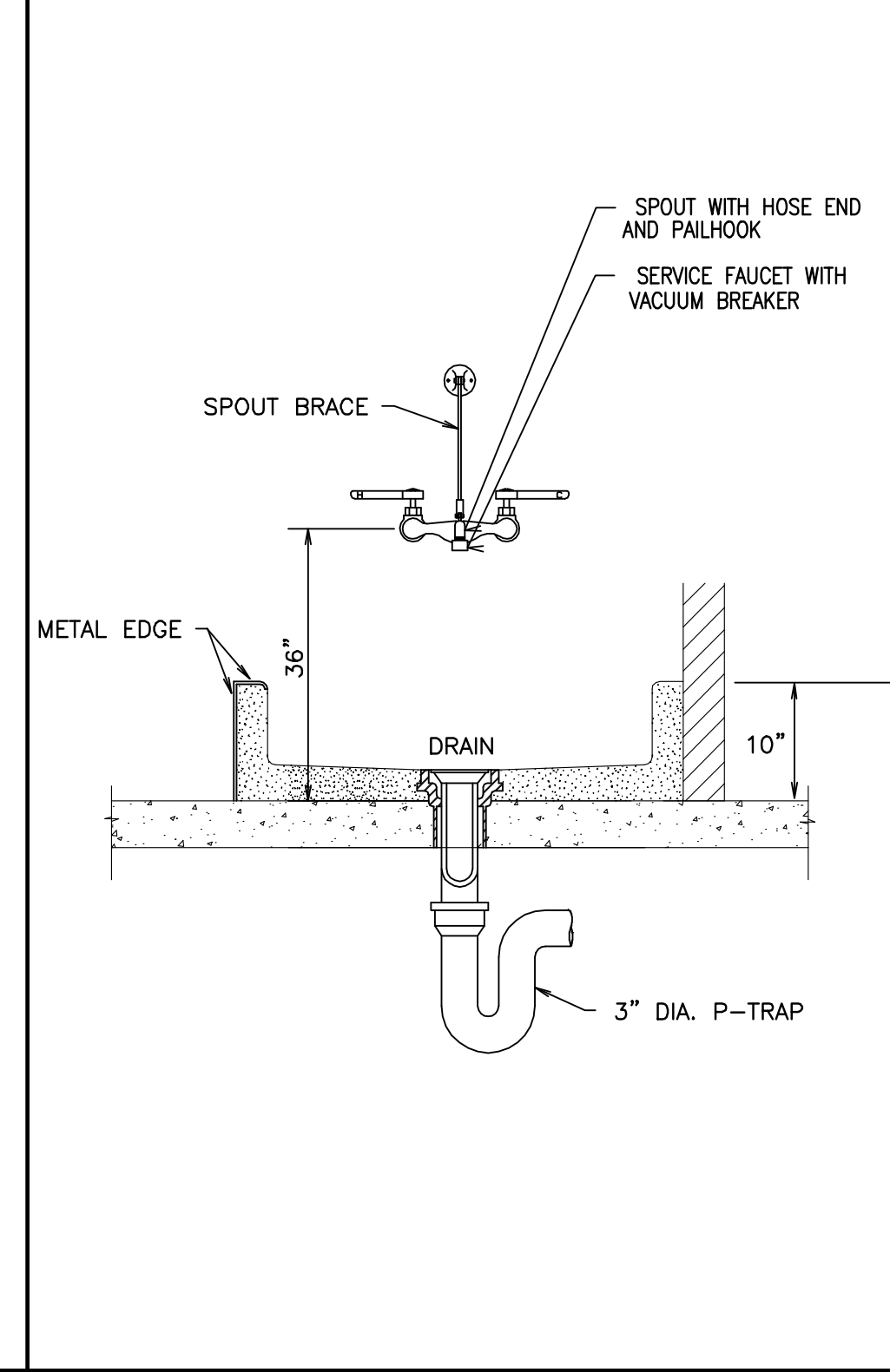
FLOOR CLEANOUT Scale: 3/4"=1'-0" File: 4



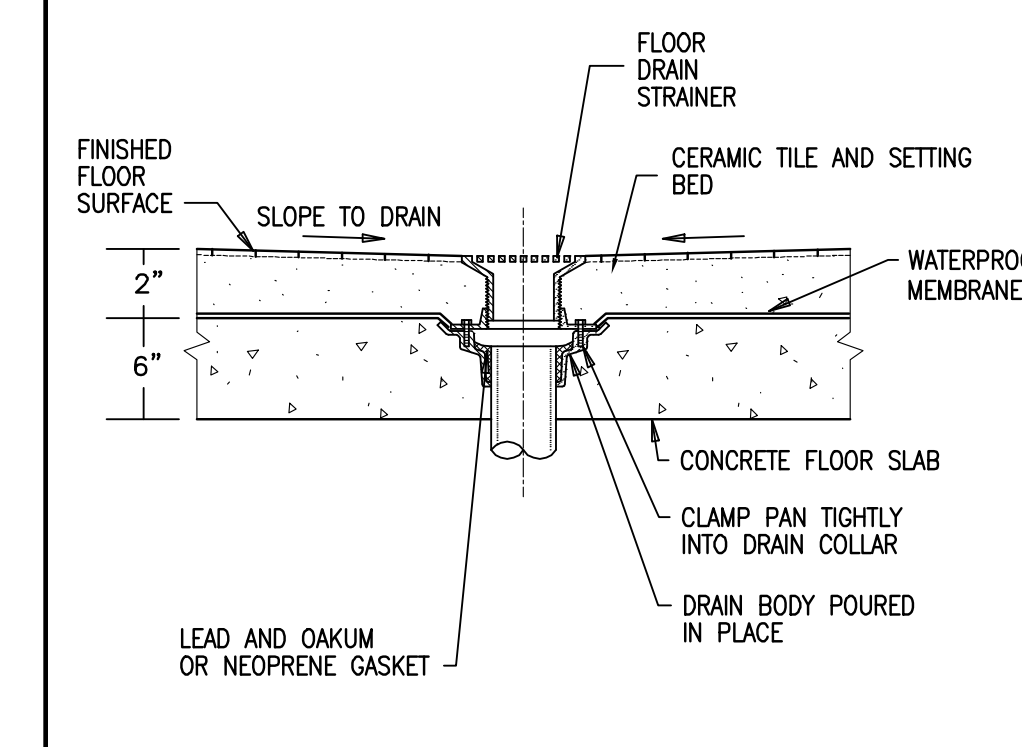
WALL CLEANOUT-FINISHED ROOMS Scale: 3/4"=1'-0" File: 5



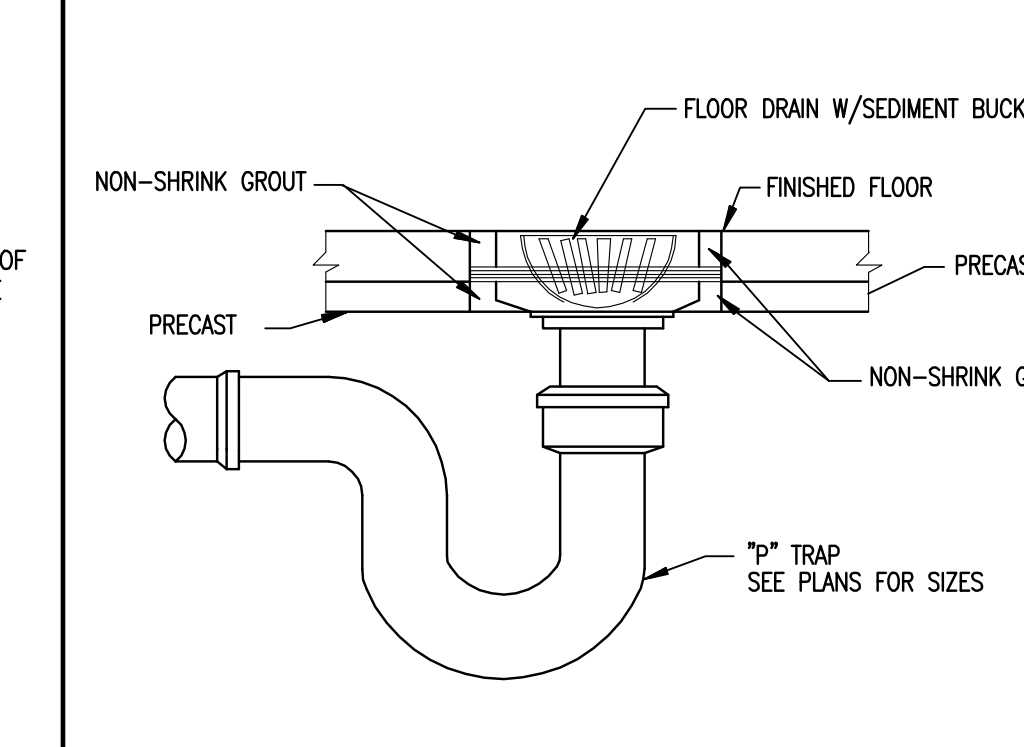
LAVATORY MOUNTING FOR METAL STUDS Scale: NTS File: 6



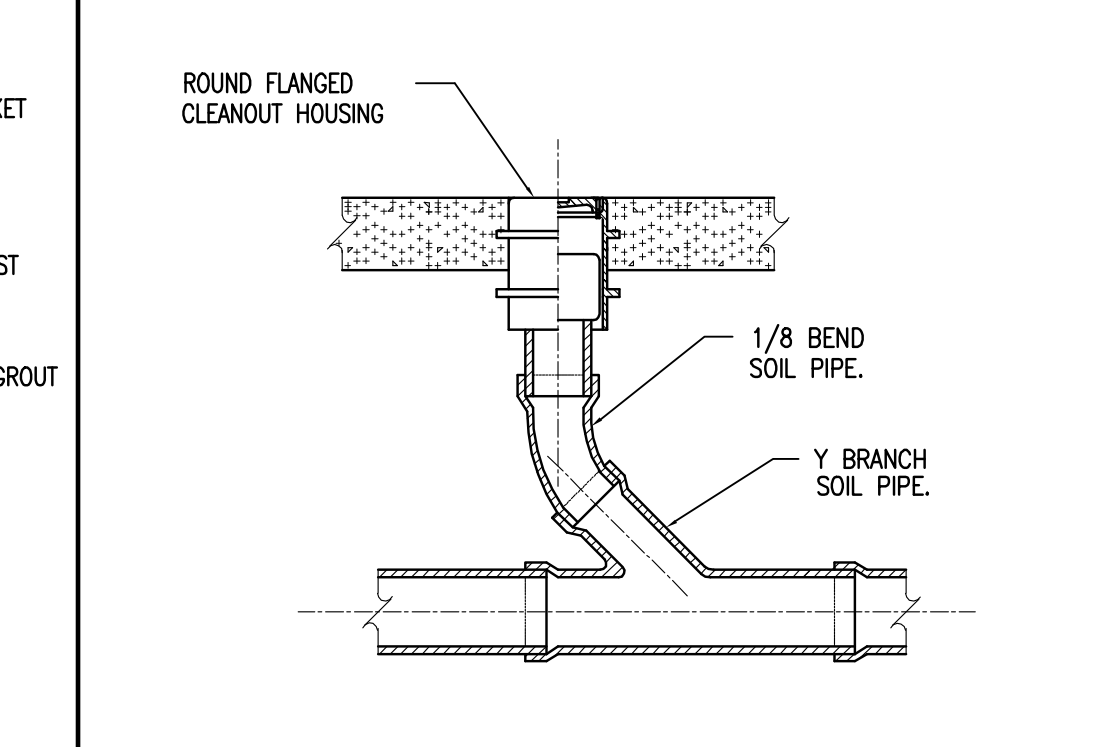
MOP SINK DETAIL Scale: NTS File: 7



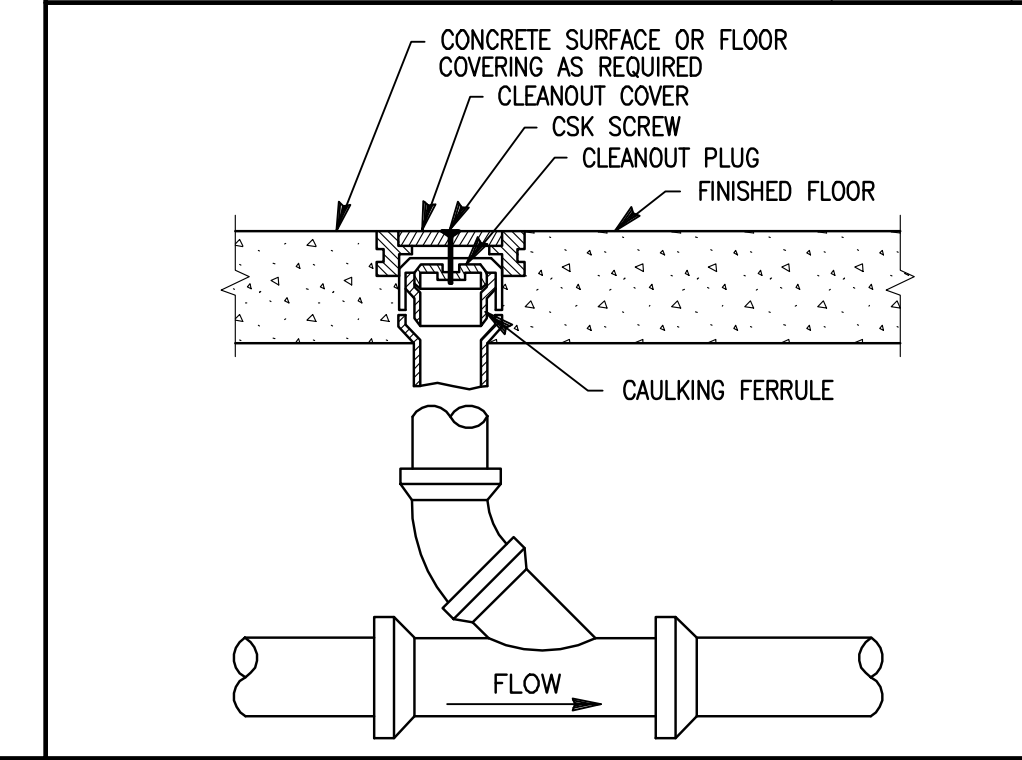
FLOOR DRAIN IN OPEN AREA Scale: 3/4"=1'-0" File: 8



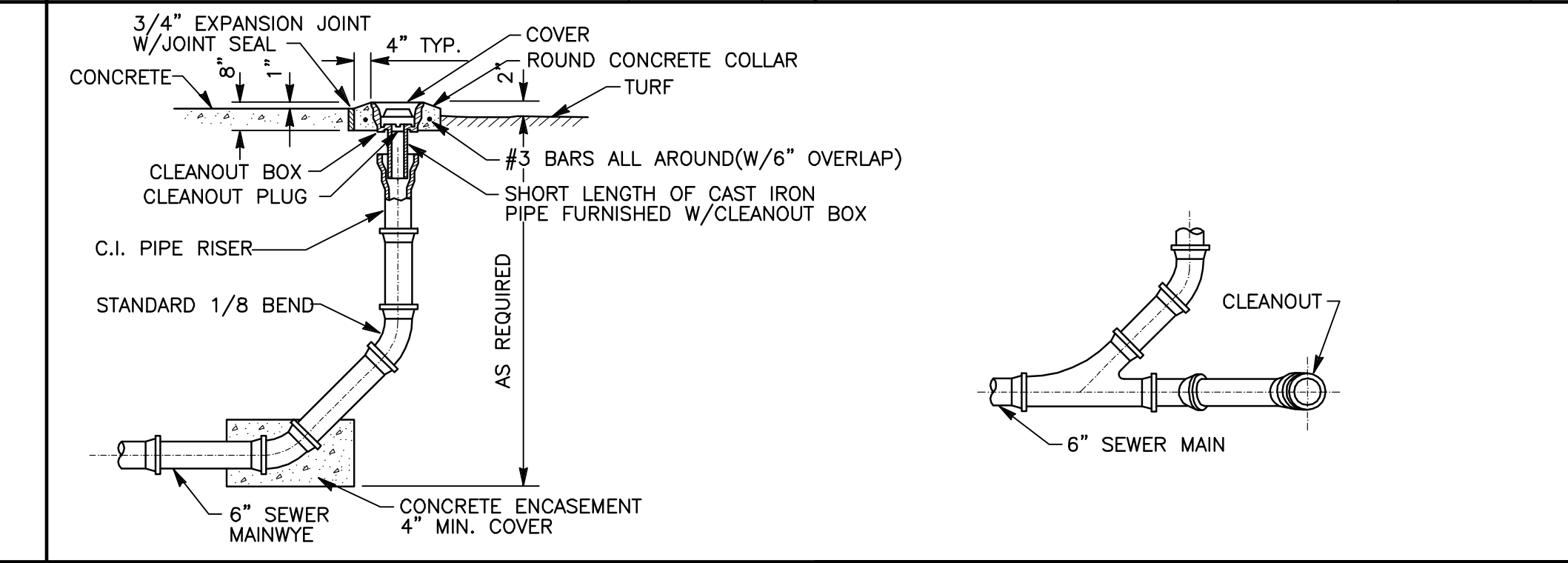
FLOOR DRAIN DETAIL Scale: 3/4"=1'-0" File: 9



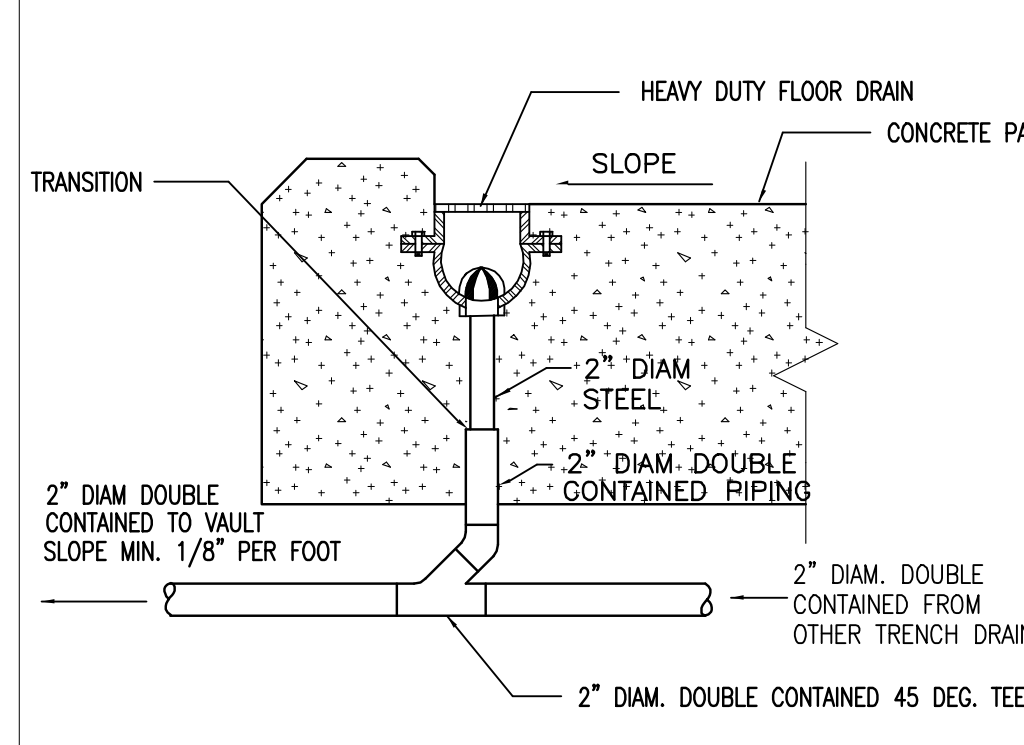
SANITARY CLEANOUT FLOOR SLAB DETAIL Scale: 3/4"=1'-0" File: 10



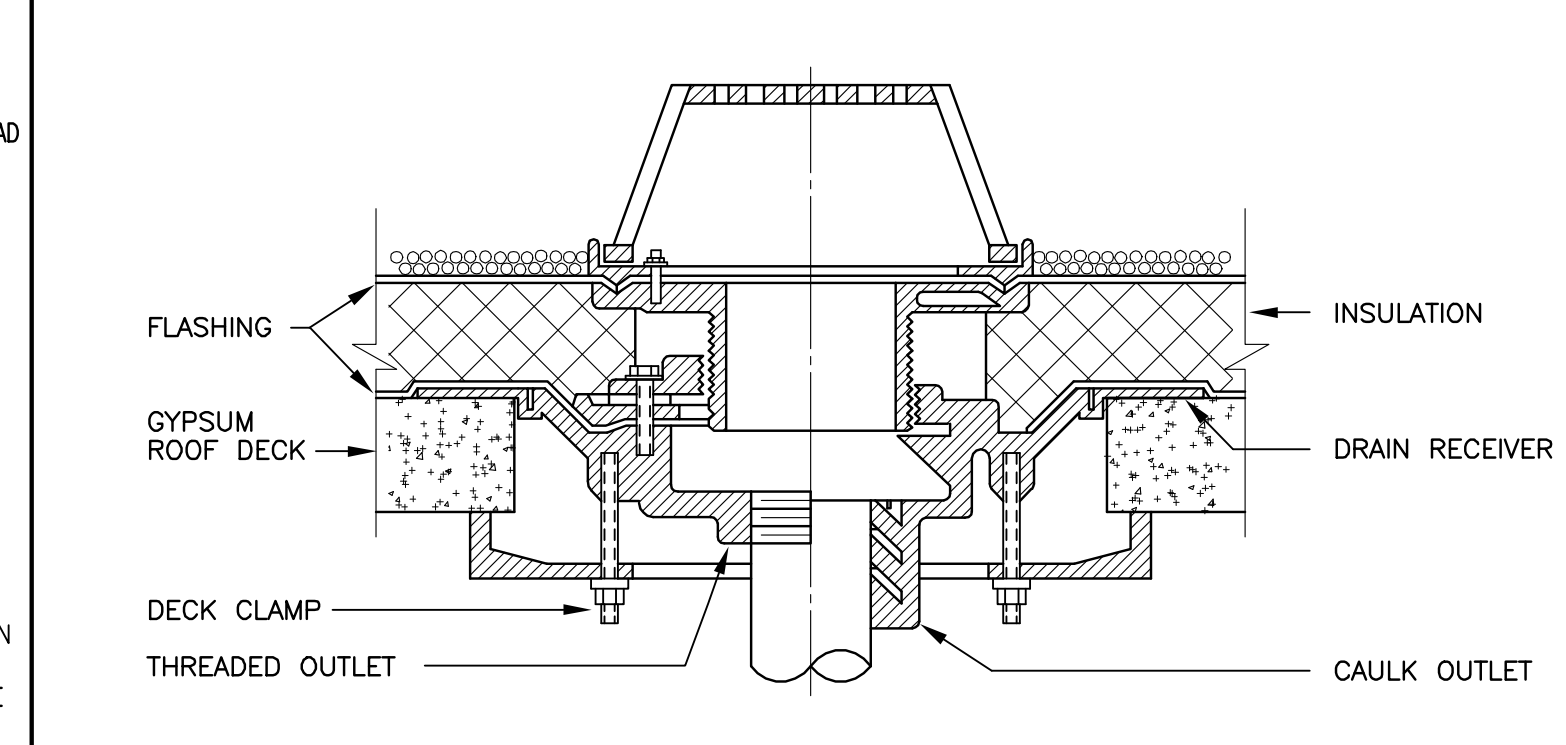
FLOOR CLEANOUT-FINISHED ROOMS Scale: NTS File: 11



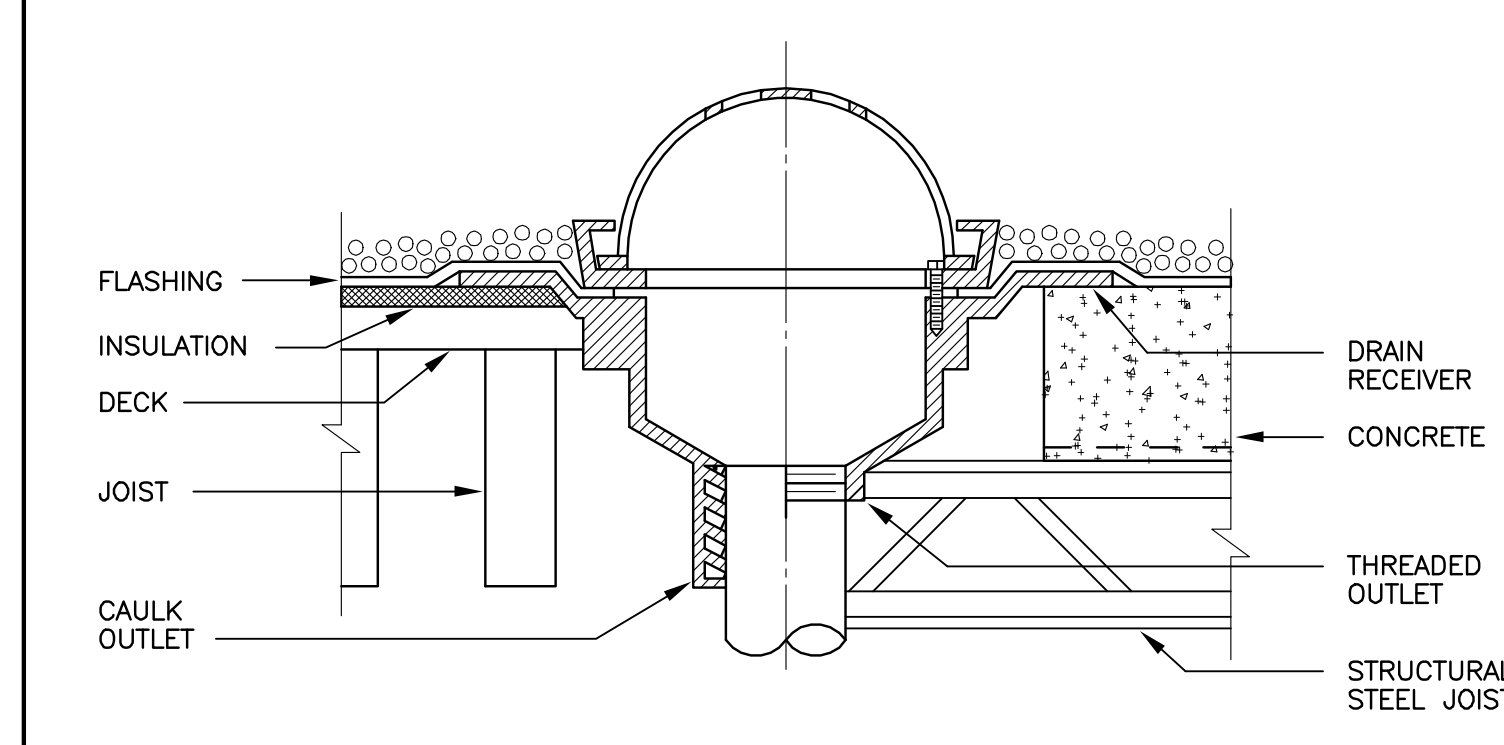
TYP. EXTERIOR CLEANOUT DETAIL ELEVATION Scale: NTS File: 12



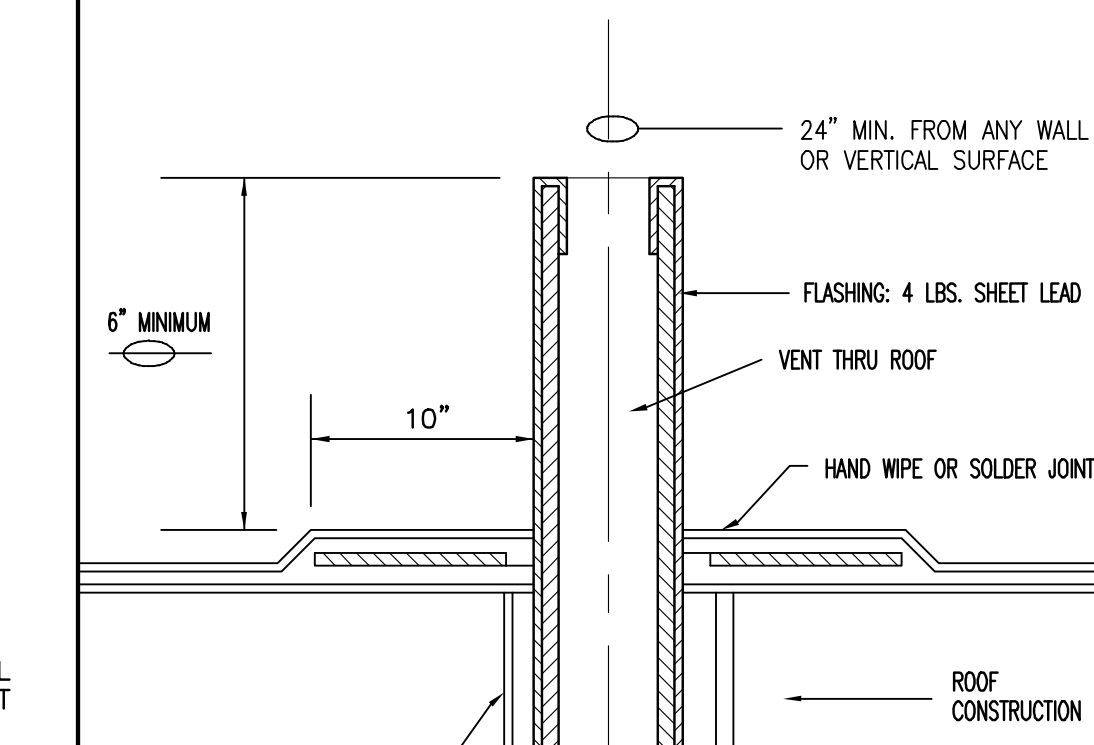
TYPICAL DOUBLE WALL DRAIN SECTION Scale: 3/4"=1'-0" File: 14



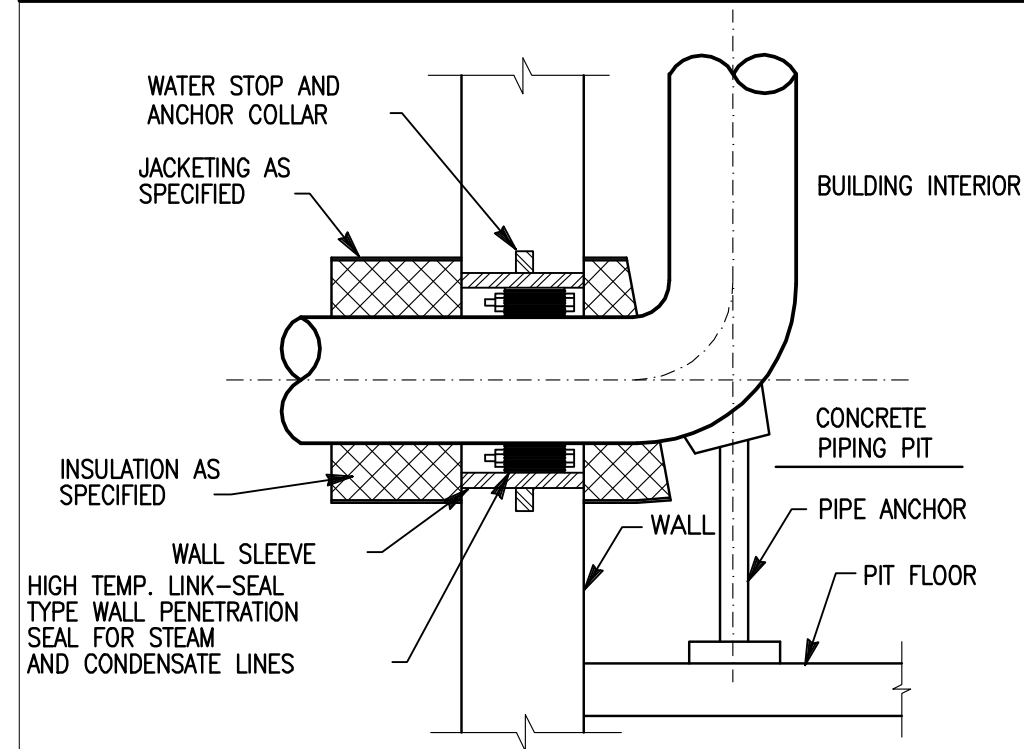
LARGE SUMP ROOF DRAIN Scale: NTS File: 15



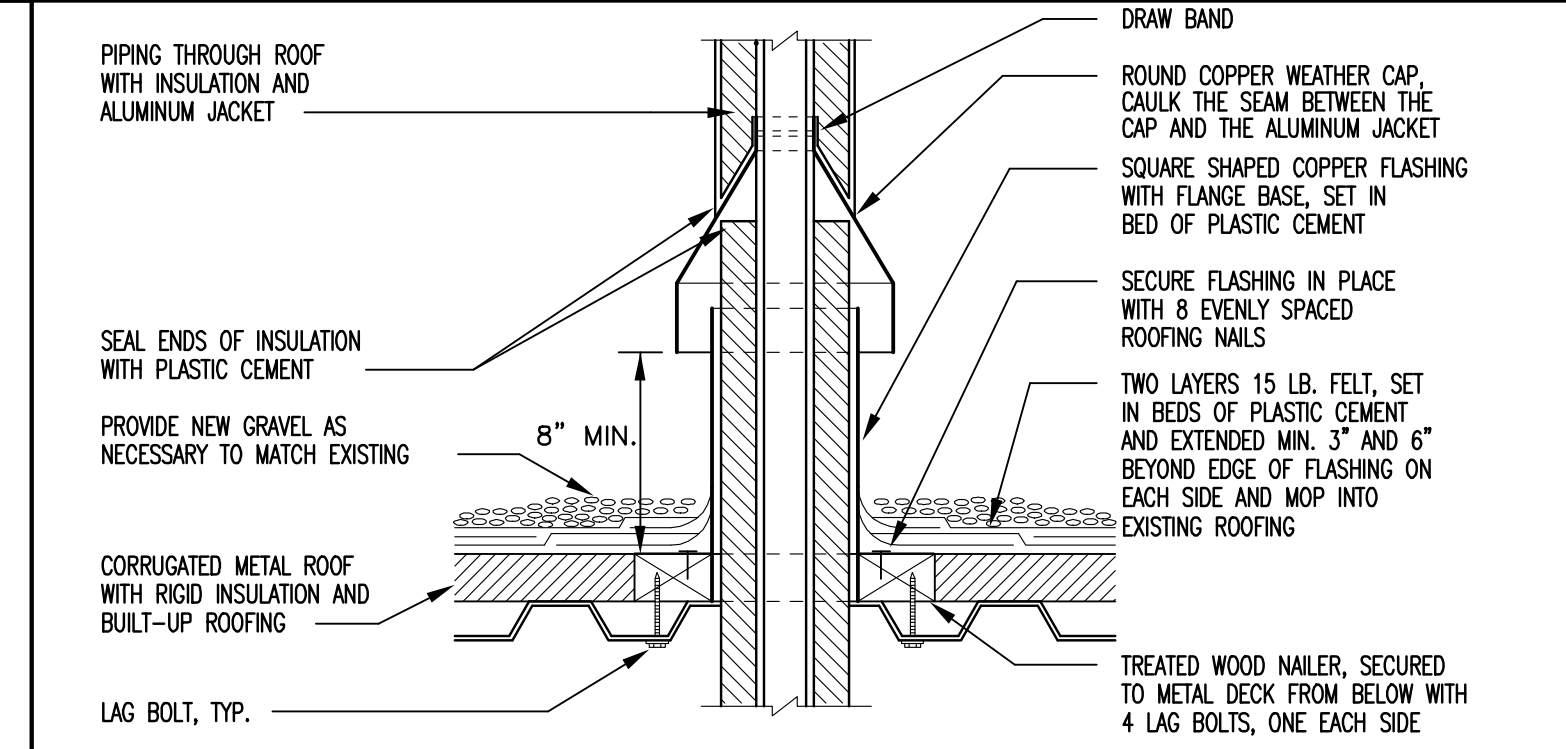
MEDIUM SUMP ROOF DRAIN Scale: NTS File: 16



VENT THRU ROOF DETAIL Scale: NTS File: 19



INSULATED PIPING WALL PENETRATION DETAIL Scale: NTS File: 17



LARGE SUMP ROOF DRAIN Scale: NTS File: 18

KBP
 KONSTANTINOV BELTRAN PARTNERSHIP
 PO Box 417
 Naperville, IL, 60566
 tel: (773) 557-9555
 tel: (630) 550-2482
 fax: (630) 563-2817
 @: wedothat@kbpartnership.com

PROJECT NAME:
 3124-3126 N. KEDZIE AVE.
 MIXED USE BUILDING

PROJECT ADDRESS:
 3124-3126 N. KEDZIE AVE.
 CHICAGO, ILLINOIS

SHEET TITLE:
**PLUMBING
 DETAILS**

REVISIONS:
 PRELIMINARY, NOT FOR
 CONSTRUCTION

I hereby certify that this plan, specification, or report was prepared by me or under my direct supervision and that I am a duly licensed Architect under the laws of the state of Illinois.

REGISTRATION NO. DATE:

ISSUE FOR PERMIT:
 PENDING

This drawing is the sole property of KBP, Inc., and is protected under US copyright law and the Architectural Works Protection Act of 1990. The copy of this drawing and/or distribution to unauthorized personnel or construction of the structure depicted herein without express written consent of KBP, Inc., would constitute infringement of KBP, Inc. The recipient of this drawing acknowledges and agrees that the ownership of the drawing and all other right, title, and interest therein, including without limitation, all rights under US Copyright and other intellectual property law, are retained by KBP, Inc.
 COPYRIGHT © 2007
 ALL RIGHTS RESERVED

SHEET NUMBER: DATE: 03/28/2007

P.3
 DRAWN BY: CHECKED BY: